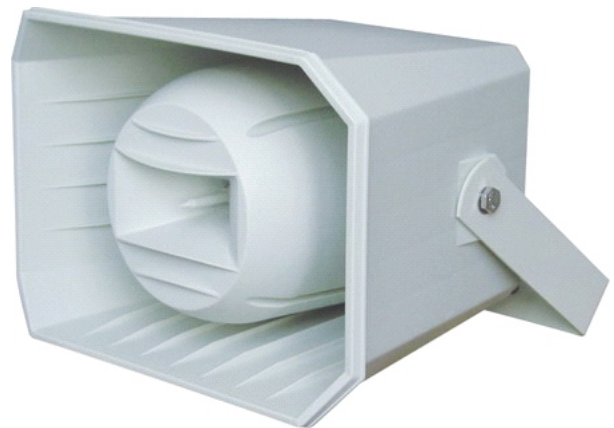


Operation Manual

CLIMATE HORN

Music Horn Speaker



Features:

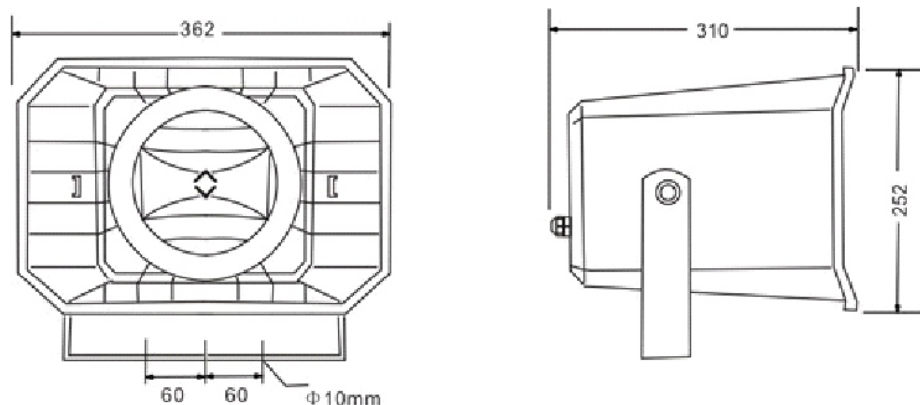
The product is a high quality music horn speaker designed to provide high quality voice and music reproduction and it can be installed indoors or outdoors. When the noisy environment requires long-distance, wide-range projection, and also requires high quality restoration, this music horn will be a good choice. They will be ideal for open-air stadiums, cruise tankers, schools, government, swimming pools, complex industrial areas, leisure areas, and theme parks.

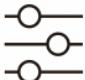


- Dust-proof and waterproof grade conforms to IEC529 IP66 standard.
- 2 way high quality speaker component.
- Lightweight ABS resin enclosure that is mechanically strong and resistant to impact.
- UV protected for many years of outdoor installation.
- Good 90Hz~20kHz wide response provide the high quality voice and music reproduction.
- 100/70V and 8Ω selectable connection.
- Matching transformer with multi taps for 100/70V input.
- Including U type bracket for fast and easy installation.

Specification:

Model No.	CLIMATE HORN
Rated Input	50W@100/70V; 100W@8Ω
Max Input	75W@100V; 150W@8Ω
High Impedance	200Ω, 400Ω, 800Ω, 1.1kΩ, 2.2kΩ, 2.8kΩ
Power Taps	100V: 50W, 25W, 12.5W, 9W, 4.5W, 3.5W 70V: 25W, 12.5W, 6.25W, 4.5W, 2.25W, 1.75W
SPL (1W /1m)	99dB
MAX SPL (Rated /1m)	116dB@100/70V; 119dB@8Ω
Frequency Response(-10dB)	90Hz~20kHz
Dispersion (4kHz / 1kHz)	30° / 65°
Power Selecting Way	Various combinations: 100V: red and yellow: 50W; yellow and green: 25W; green and white: 12.5W; red and green: 9W; yellow and white: 4.5W; red and white: 3.5W; red and black: 8Ω
Material	Housing: High Impact ABS; Grille: Steel
Color	Gray
Temperature / Humidity	-30°C~60°C; <95%
Water Protection	IEC529 IP66
Speaker Component	6.5"woofer + 1" tweeter
Dimensions	362(W) x 252(H) x 310(D) mm
Weight	3.9kg
Mounting	U Type Mounting Bracket
Shipping Weight	5kg, 1pc
Shipping Dimensions	0.0437CBM, 39 x 28 x40 cm, 1pc

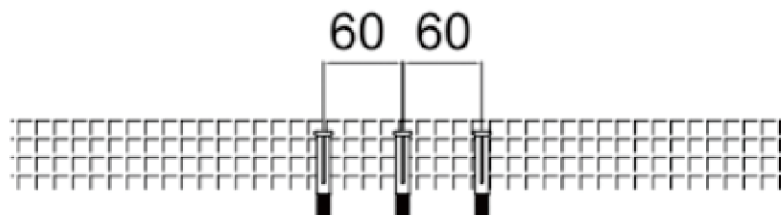
Wiring instruction:



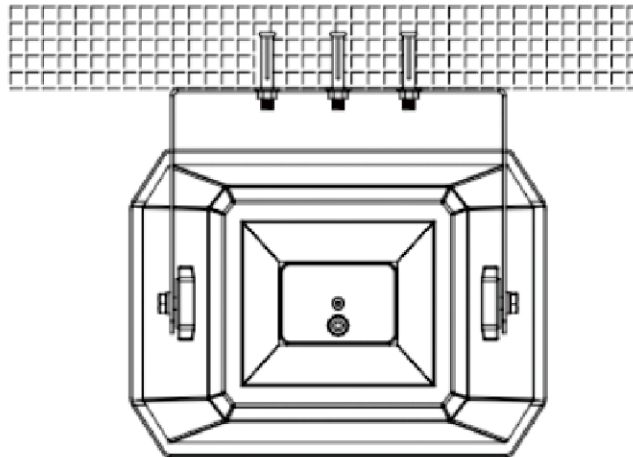
 IHOS	
<p>Model: CLIMATE HORN Rated power : 50W Line voltage : 100V</p>	<p>Red (1): Yellow (2) 50W Yellow (2): Green (3) 25W Green (3): White (4) 12.5W Red (1): Green (3) 9W Yellow (2): White (4) 4.5W Red (1): White (4) 3.5W Red (1): Black (5) 8 Ohm</p>
 	

Mounting instruction:

1. First, drill 3 mounting holes on the wall suitable for M8 expansion screw rods, the spacing between the holes is 60MM, and drill M8 expansion screw rods.



2. Align the holes on the product bracket with the pre-drilled screw rods on the wall, lock the M8 nuts, and fix the product on the wall.



3. Then adjust the required angle of the speaker.

